

THE QUINLAN: 476 Main Street, Suite 208,

Mahone Bay



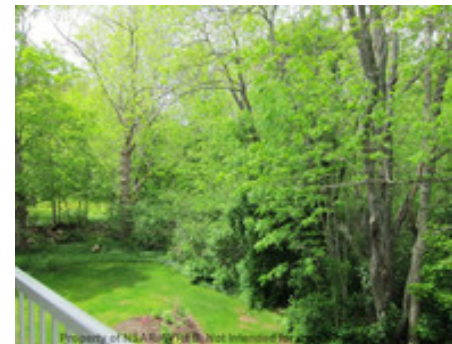
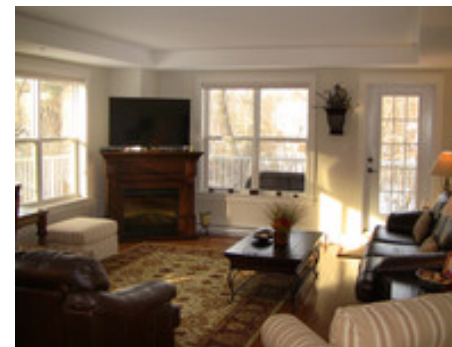
"Turn-Key" Condo in Mahone Bay

\$259,000

Convenient Condo-Living in the heart of pretty Mahone Bay. This charming seaside community, abundant with unique shops & services, is one of the true jewels of Nova Scotia. Enjoy a quality lifestyle on the beautiful South Shore, less than an hour from metro Halifax. "The Quinlan" is a 5 year old, 34-unit complex tucked peacefully away from Main Street on a 1.3 acre lot bordered by tall trees and the babbling Maggie-Maggie Brook. Solid concrete construction, security access, underground parking, elevator, designer lobby and multi-purpose/amenities room. An easy 2 minute stroll to the bustling downtown, famous for its one-of-a-kind shops, popular seasonal festivals, and picturesque harbour that is alive with boats in summer. Suite 208 is a spacious corner unit featuring a fabulous covered wrap-around balcony overlooking lawns and mature trees. The contemporary floor plan emphasizes light and space with quality finishes. 2 bedrooms/2 full baths (Master with walk-in and ensuite), a custom Kitchen just off the open Living & Dining room area. Lots of additional storage space, including a handy Laundry/Utility Room. Air-conditioned, 5 appliances, and to top it all off, Suite 208 is offered FULLY 'TURN-KEY', beautifully appointed with quality North Carolina furniture, wall art, accessories, appliances, electronics, and just about anything else you could wish for. Everything is in `just like new` condition -- just pick up your keys and settle in! Enjoy comfortable worry-free living...the perfect seasonal retreat.



see full details for this and other fine properties at:
www.OceanHomesNovaScotia.com



Listing Agents

Adam Dial C: 902-298-0336
E: adam@reddoorrealty.ca

Cindy Dial C: 902-298-0332
E: cindy@reddoorrealty.ca

Property Highlights

Age ±: 2007
Lot Size: 1.3 Acres
Style: Condo Apartment
Floor Space: 1,198 sq ft
Bedrooms: 2
Bathrooms: 2
Flooring: carpet, engineered hardwood, ceramic tile
Heating: electric baseboards, heat pump AC
Parking: secure, heated, inground, parking garage
Features: covered wrap-around balcony, elevator, wheel chair access, intercom, electric fireplace, en-suite, HRV, storage locker
Fireplace/s: electric
Zoning: residential/condo
Assessment: \$223,000 (2013)
Taxes: \$2,631 (2013)

Rooms

Living Room: 18'2" x 15'8" (Main)
Dining Room: 11' x 10'2" (Main)
Kitchen: 11' x 11'2" (Main)
Master Bedroom: 13'8" x 11'2" (Main)
Walk-in Closet: 7'7" x 5' (Main)
Master Ensuite: 9' x 5'9" (3-pc) (Main)
Bedroom: 12'5" x 9'10" (Main)
Bath: 8' x 5' (4-pc) (Main)
Foyer/Hall: 7'2" x 6'10" (Main)
Laundry: 7'7" x 7'2" (Main)

Directions

Main Street Mahone Bay, tucked behind "Suttles & Seawinds". Look for "The Quinlan" sign and driveway off Main Street.