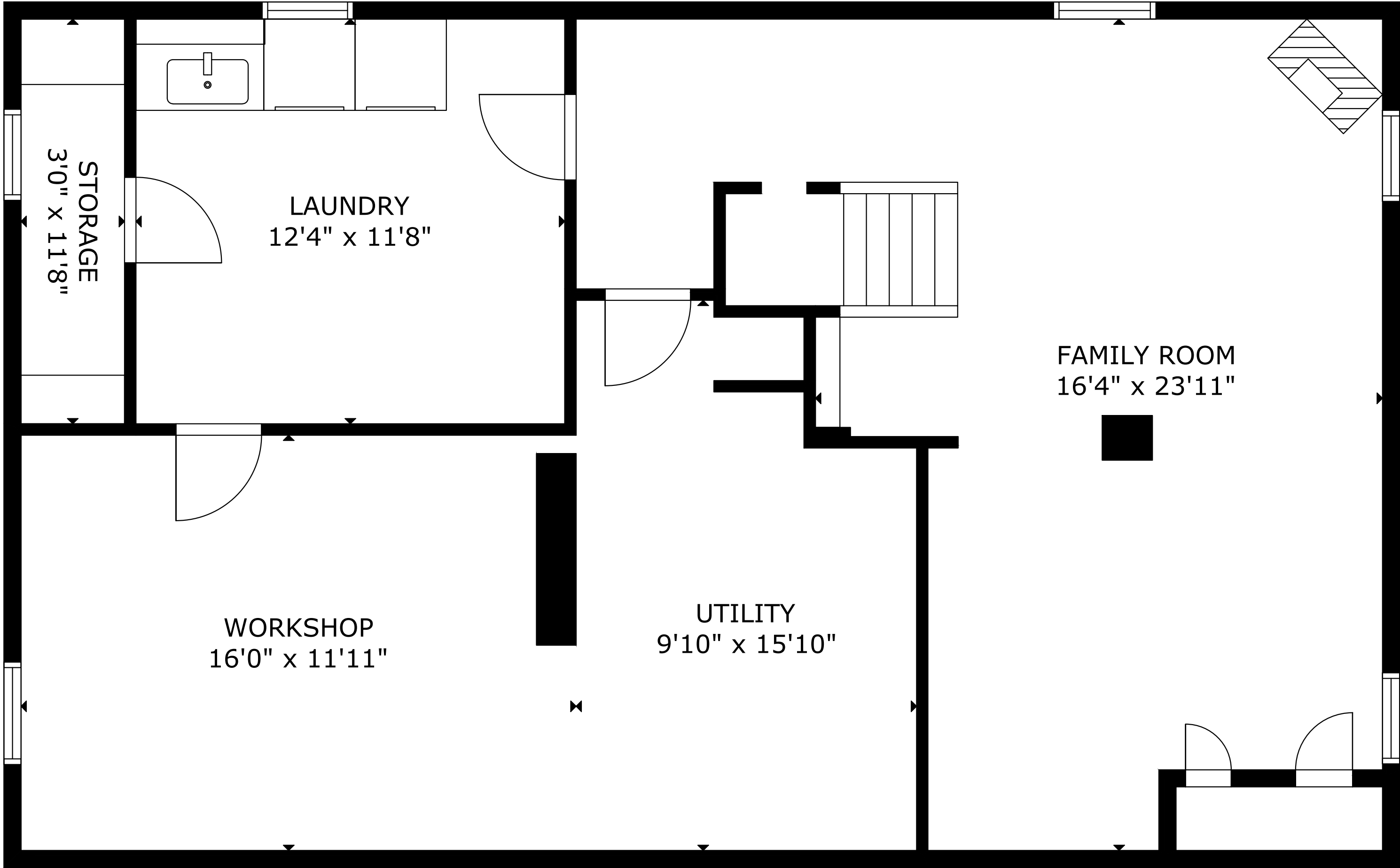
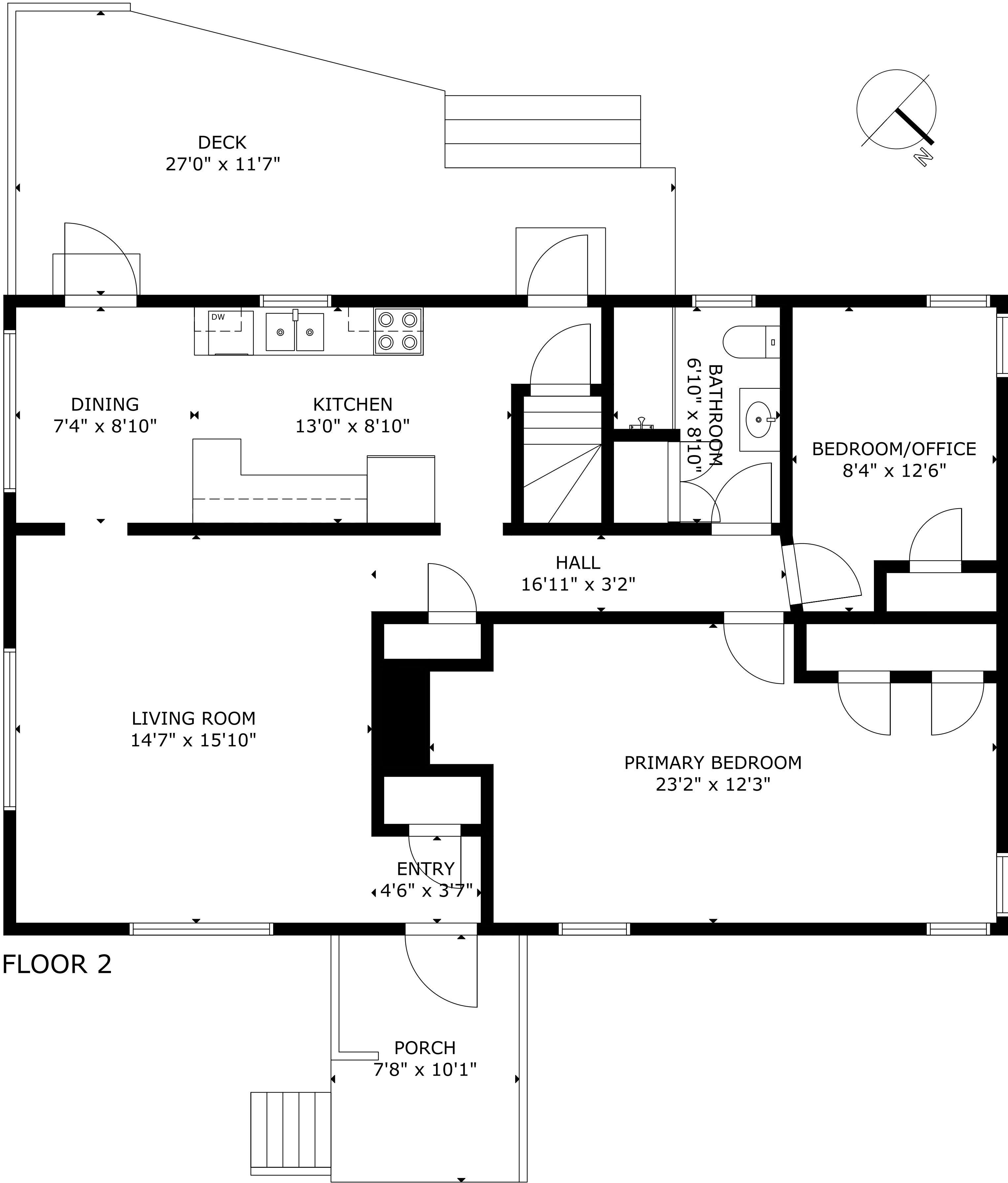


# 129 Hillcrest St, Bridgewater NS B4V 1T2, CA



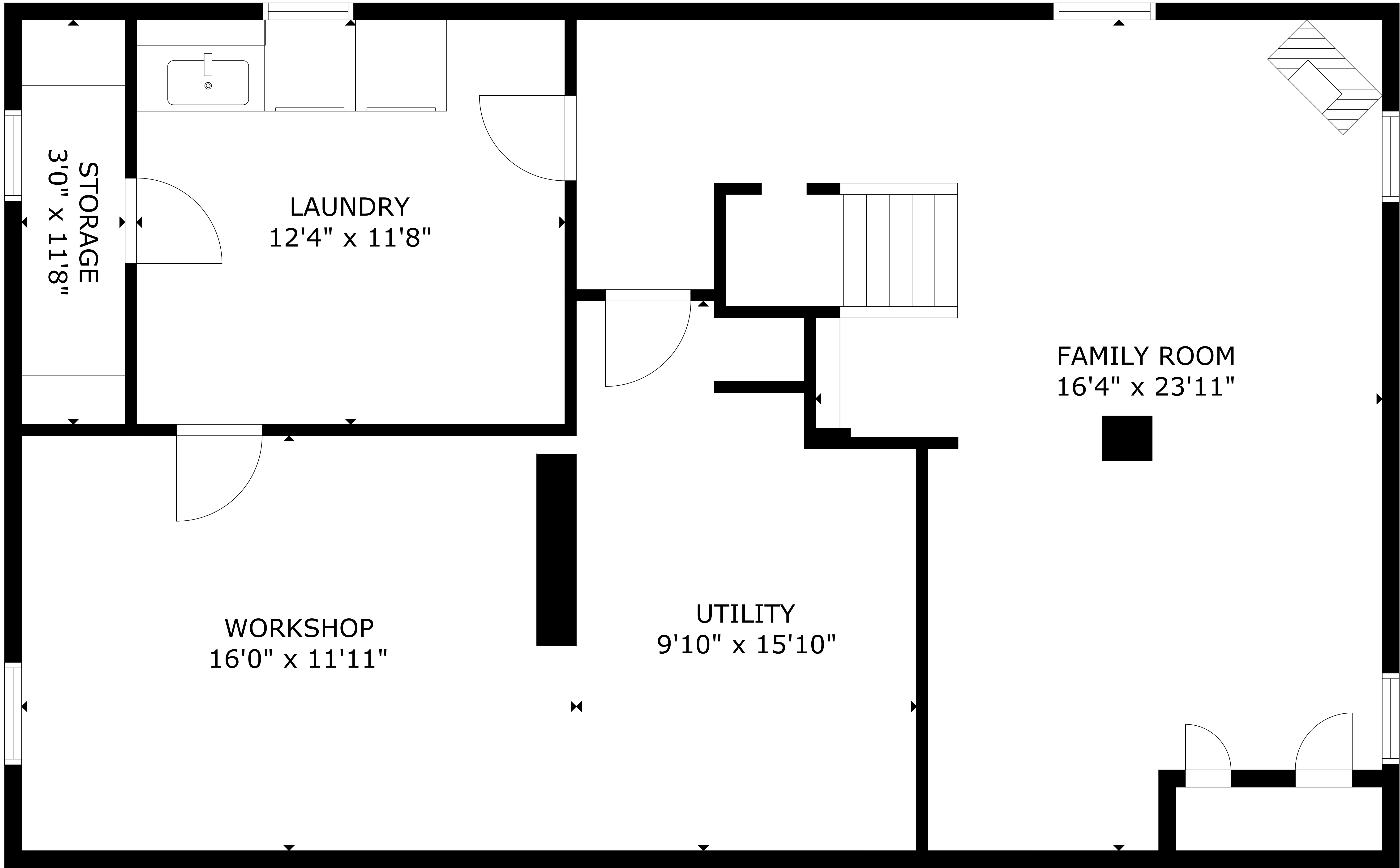
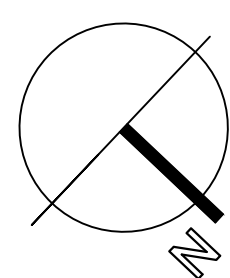
FLOOR 1



FLOOR 2

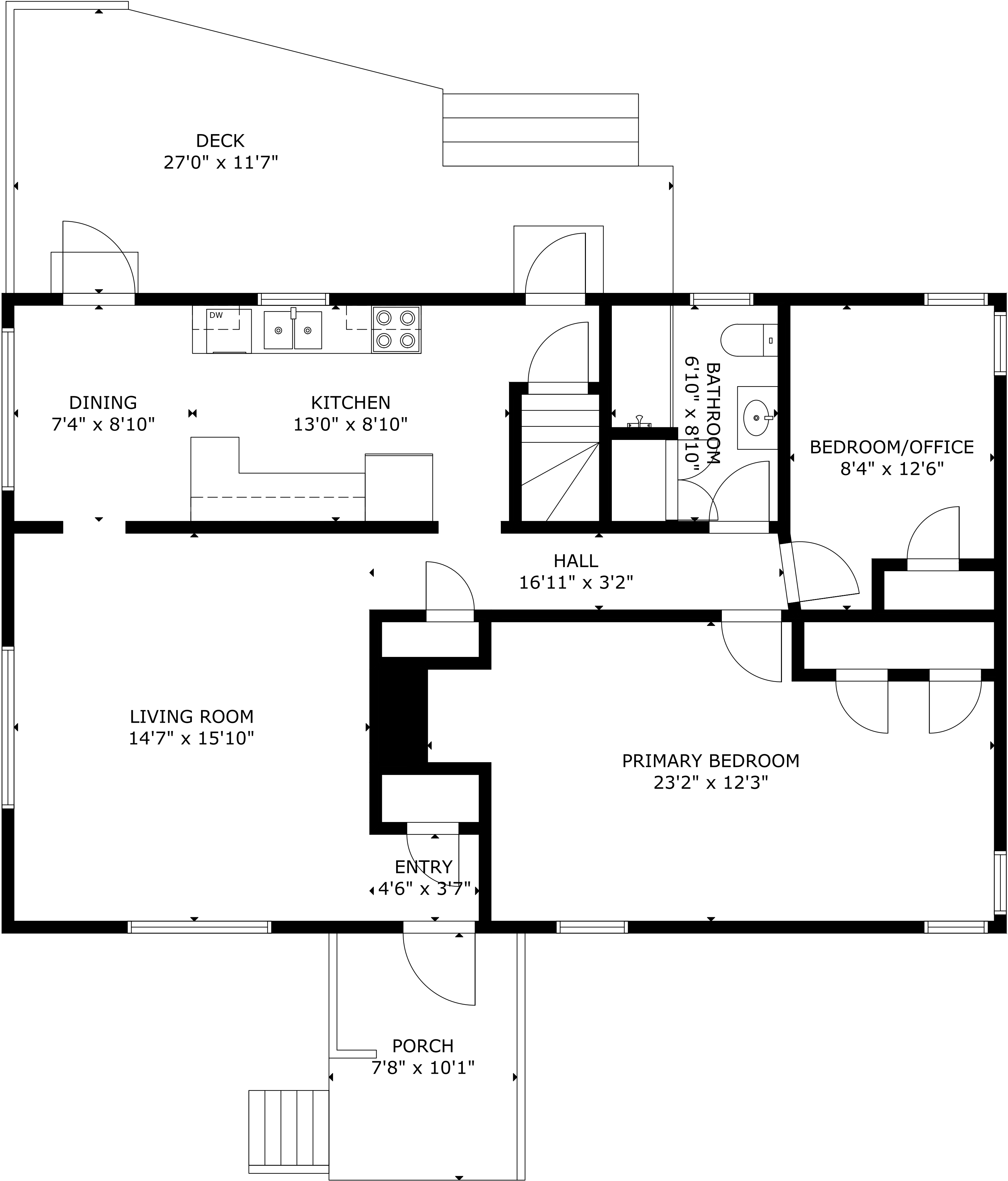
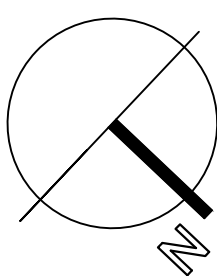
GROSS INTERNAL AREA  
TOTAL: 1,948 sq.ft  
FLOOR 1: 936 sq.ft, FLOOR 2: 1,012 sq.ft  
EXCLUDED AREAS: PORCH: 78 sq.ft, DECK: 232 sq.ft  
SIZE AND DIMENSIONS ARE APPROXIMATE, ACTUAL MAY VARY

129 Hillcrest St, Bridgewater NS B4V 1T2, CA



GROSS INTERNAL AREA  
TOTAL: 1,948 sq.ft  
FLOOR 1: 936 sq.ft, FLOOR 2: 1,012 sq.ft  
EXCLUDED AREAS: PORCH: 78 sq.ft, DECK: 232 sq.ft  
SIZE AND DIMENSIONS ARE APPROXIMATE, ACTUAL MAY VARY

# 129 Hillcrest St, Bridgewater NS B4V 1T2, CA



GROSS INTERNAL AREA

TOTAL: 1,948 sq.ft

FLOOR 1: 936 sq.ft, FLOOR 2: 1,012 sq.ft

EXCLUDED AREAS: PORCH: 78 sq.ft, DECK: 232 sq.ft

SIZE AND DIMENSIONS ARE APPROXIMATE, ACTUAL MAY VARY