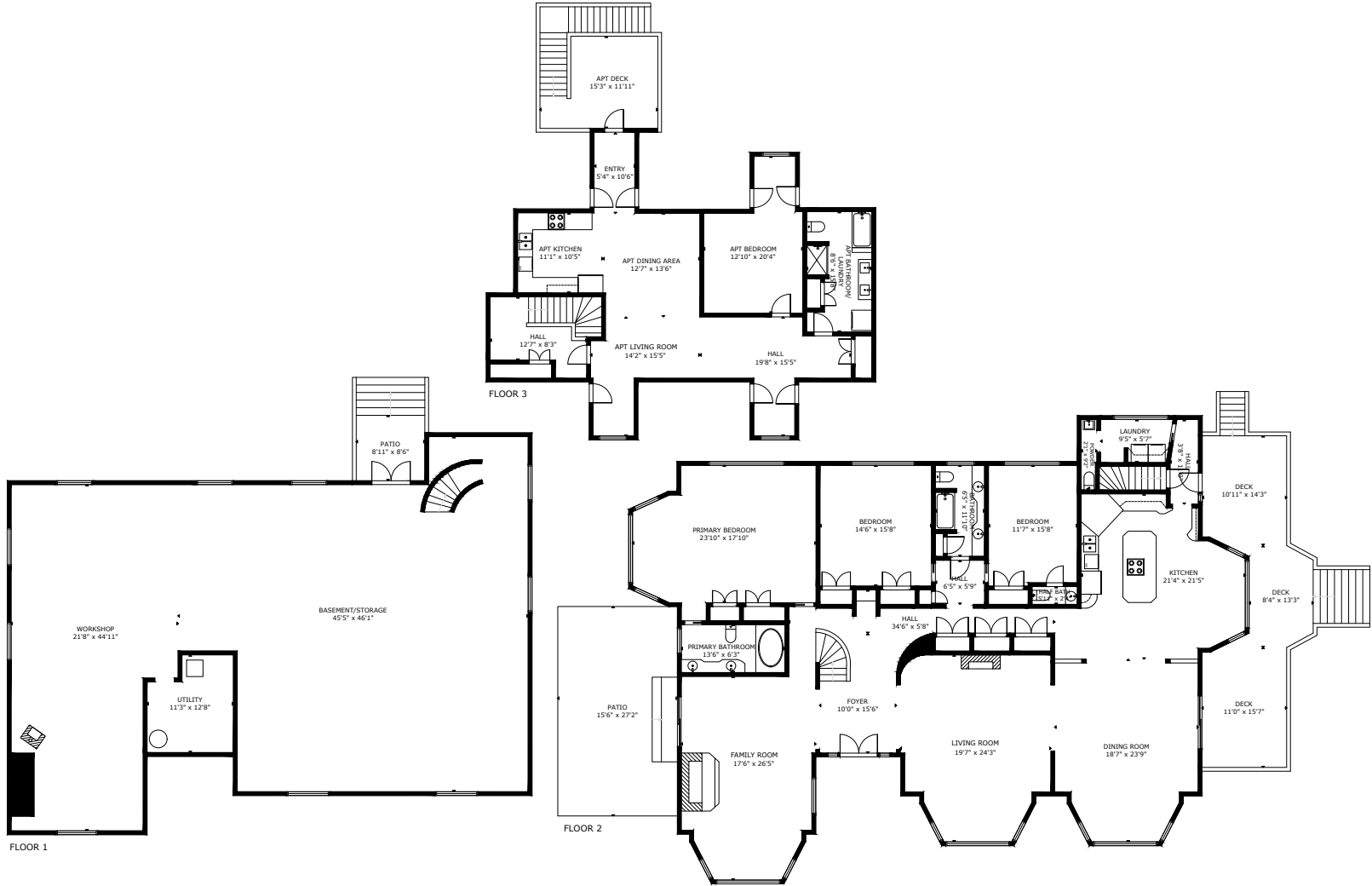
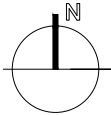
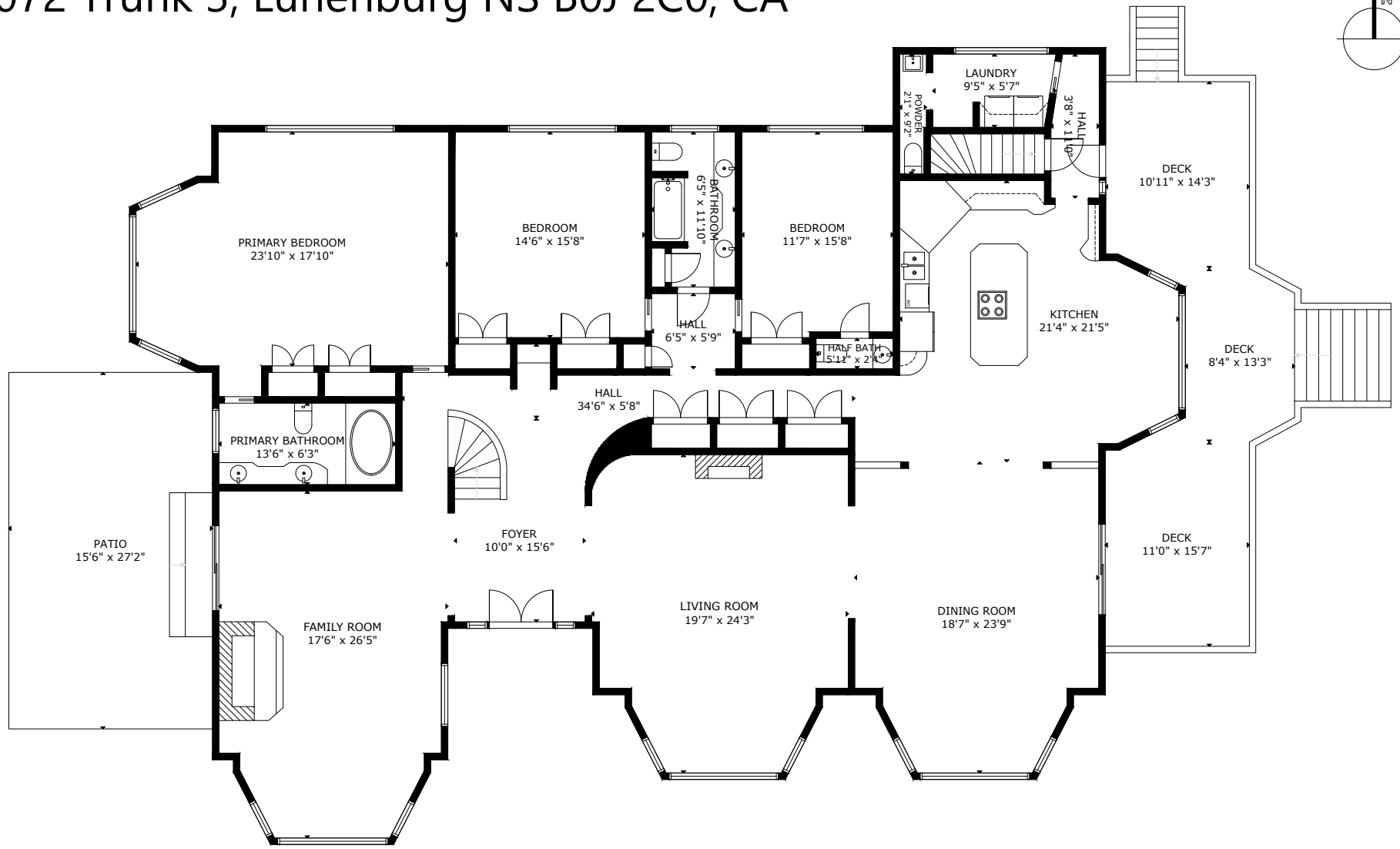
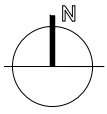


12072 Trunk 3, Lunenburg NS B0J 2C0, CA



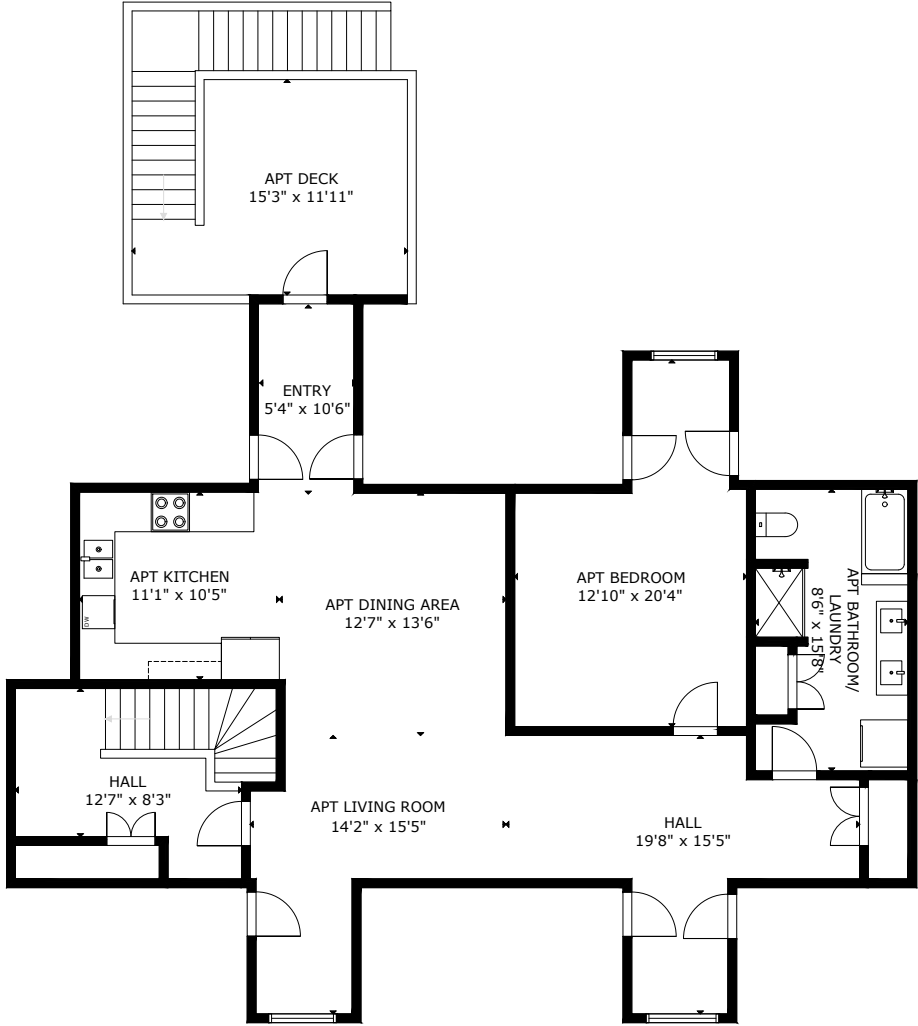
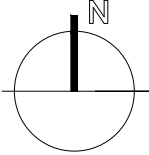
GROSS INTERNAL AREA
 TOTAL: 7,324 sq ft
 FLOOR 1: 2,780 sq ft, FLOOR 2: 3,343 sq ft, FLOOR 3: 1,201 sq ft
 EXCLUDED AREAS: PATIO: 541 sq ft, DECK: 740 sq ft
 SIZE AND DIMENSIONS ARE APPROXIMATE, ACTUAL MAY VARY

12072 Trunk 3, Lunenburg NS B0J 2C0, CA



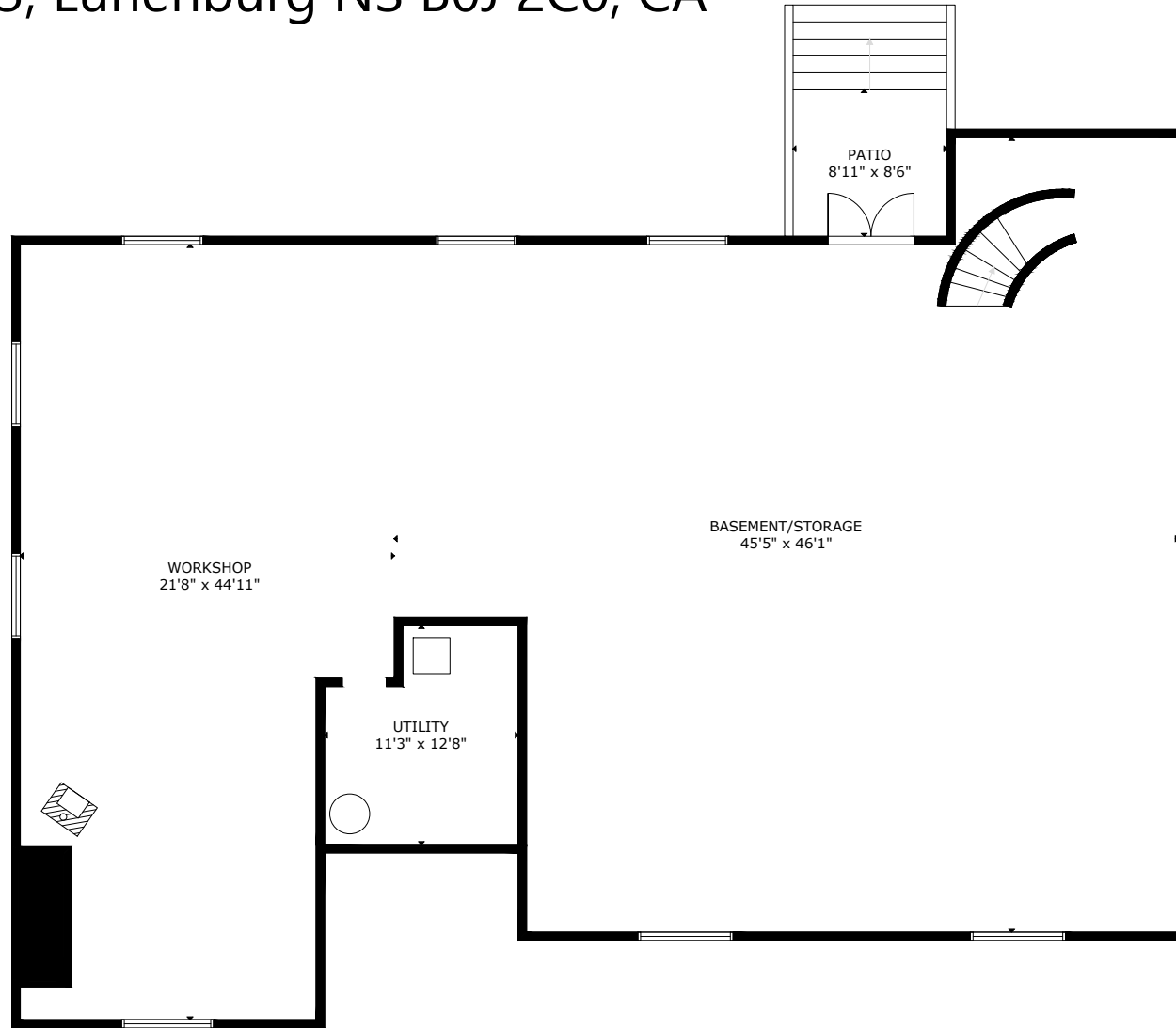
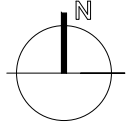
GROSS INTERNAL AREA
TOTAL: 7,324 sq ft
FLOOR 1: 2,780 sq ft, FLOOR 2: 3,343 sq ft, FLOOR 3: 1,201 sq ft
EXCLUDED AREAS: PATIO: 541 sq ft, DECK: 740 sq ft
SIZE AND DIMENSIONS ARE APPROXIMATE, ACTUAL MAY VARY

12072 Trunk 3, Lunenburg NS B0J 2C0, CA



GROSS INTERNAL AREA
TOTAL: 7,324 sq ft
FLOOR 1: 2,780 sq ft, FLOOR 2: 3,343 sq ft, FLOOR 3: 1,201 sq ft
EXCLUDED AREAS: PATIO: 541 sq ft, DECK: 740 sq ft
SIZE AND DIMENSIONS ARE APPROXIMATE, ACTUAL MAY VARY

12072 Trunk 3, Lunenburg NS B0J 2C0, CA



GROSS INTERNAL AREA
TOTAL: 7,324 sq ft
FLOOR 1: 2,780 sq ft, FLOOR 2: 3,343 sq ft, FLOOR 3: 1,201 sq ft
EXCLUDED AREAS: PATIO: 541 sq ft, DECK: 740 sq ft
SIZE AND DIMENSIONS ARE APPROXIMATE, ACTUAL MAY VARY